

**Hort
Innovation**

Australian Horticulture Tree Crop Mapping

Lucy Noble, Head of Industry Insights

22 08 2024





Section 01

Crop Mapping

Crop Mapping at a glance

>160,000

Approximate **hectares of horticulture** mapped on the [Australian Tree Crop Map](#) in August 2024.

\$2.6 billion

Total production value of Australian horticulture mapped.

16 per cent

of the horticulture sector (by value) is **mapped using satellite imagery**.



What are we talking about?

Accurate horticulture category mapping, from the individual block to the national level

Inputs



Industry and government data



Satellite imagery



Aerial photography



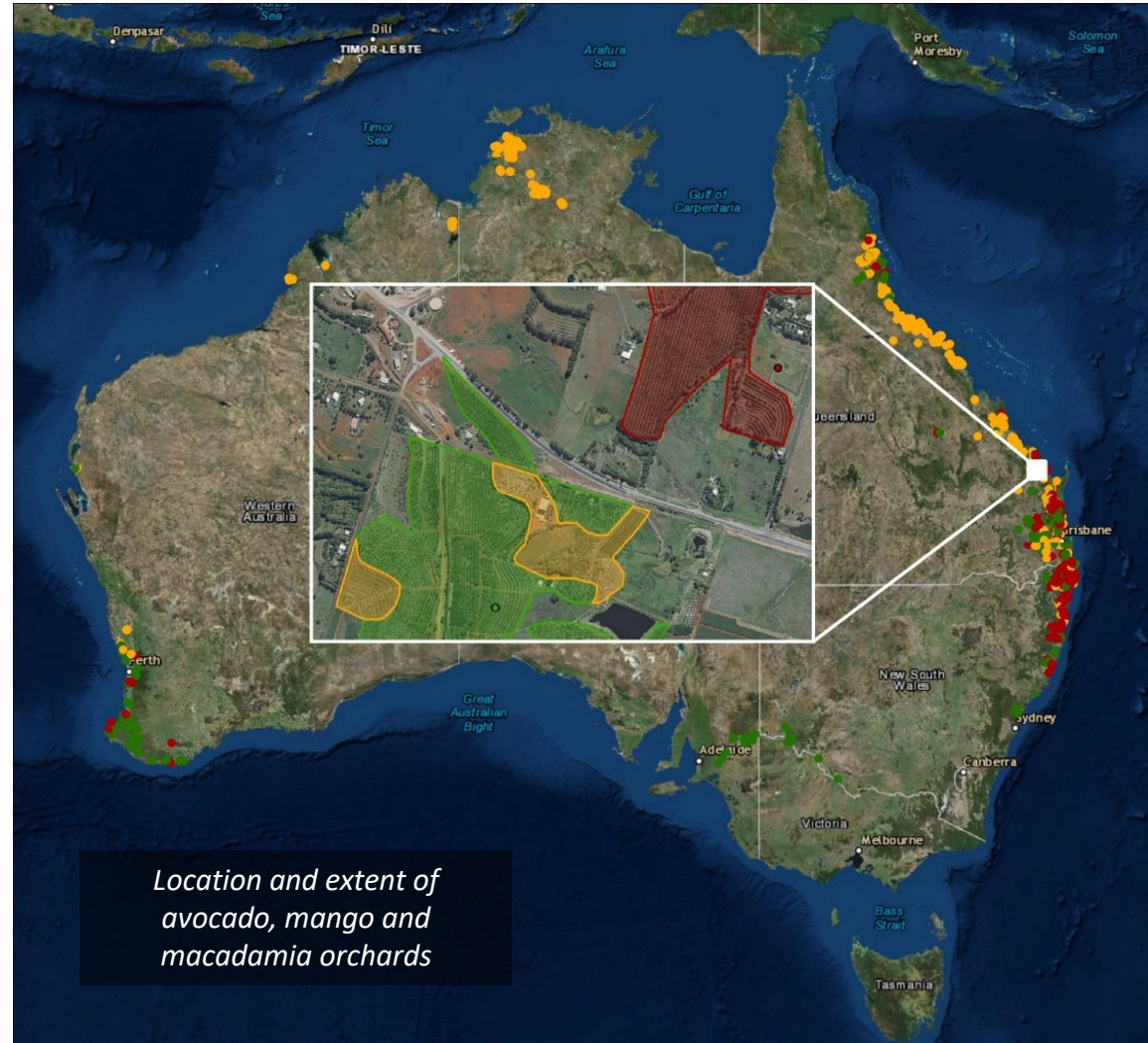
Citizen Science
'Land use Survey App'



Field observations



Expert knowledge & industry engagement

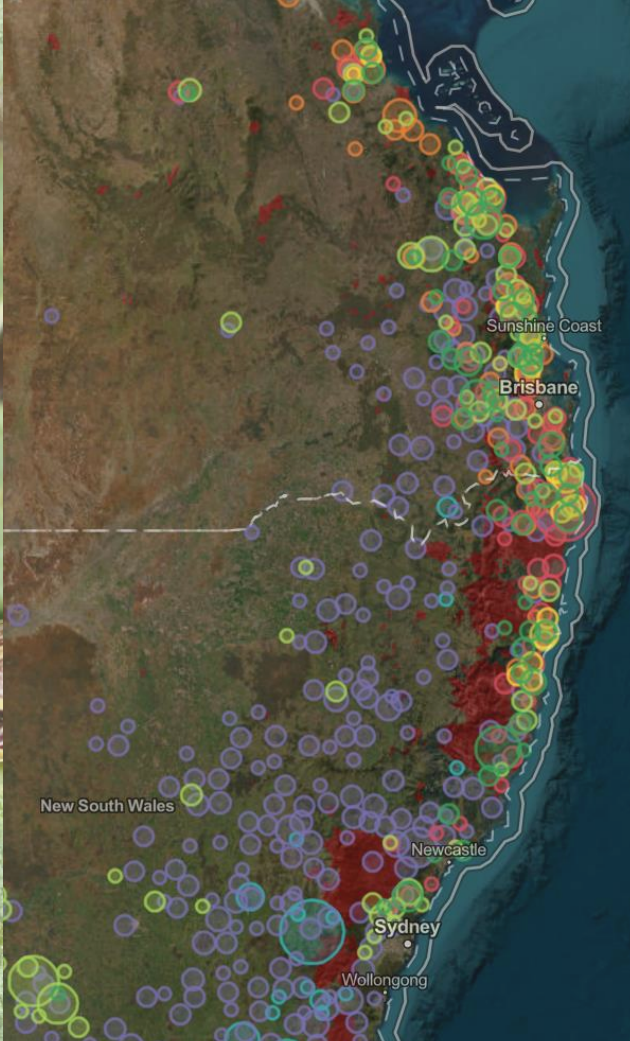


Location and extent of avocado, mango and macadamia orchards



Biosecurity

Regional biosecurity preparedness and response



Natural Disaster

Natural disaster planning, response and policy



Production Area Data

Foundational data layer for further application of current and emerging technology



Industry Planning

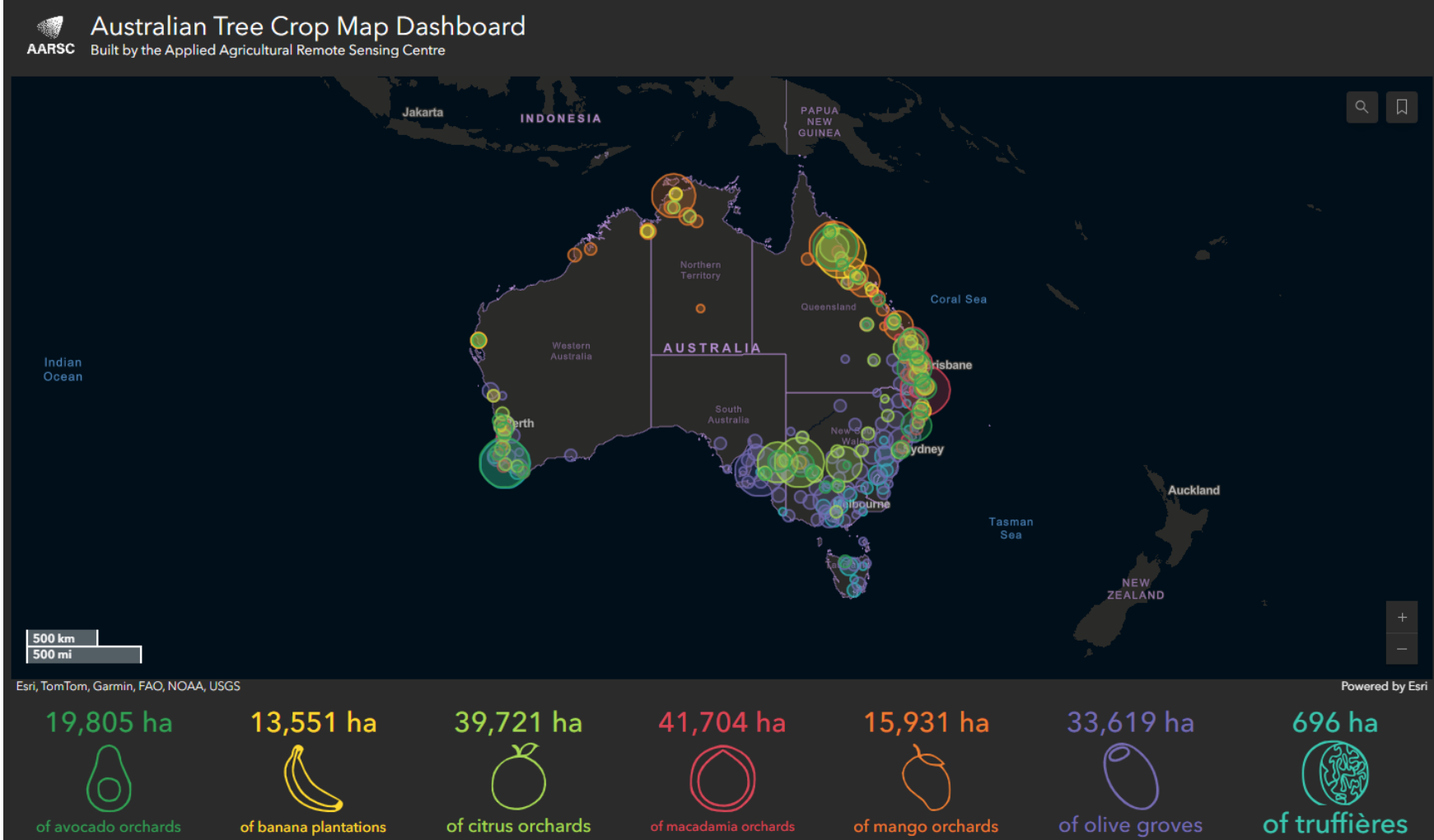
Data to support industry decision-making, planning and monitor industry trends & forecasts



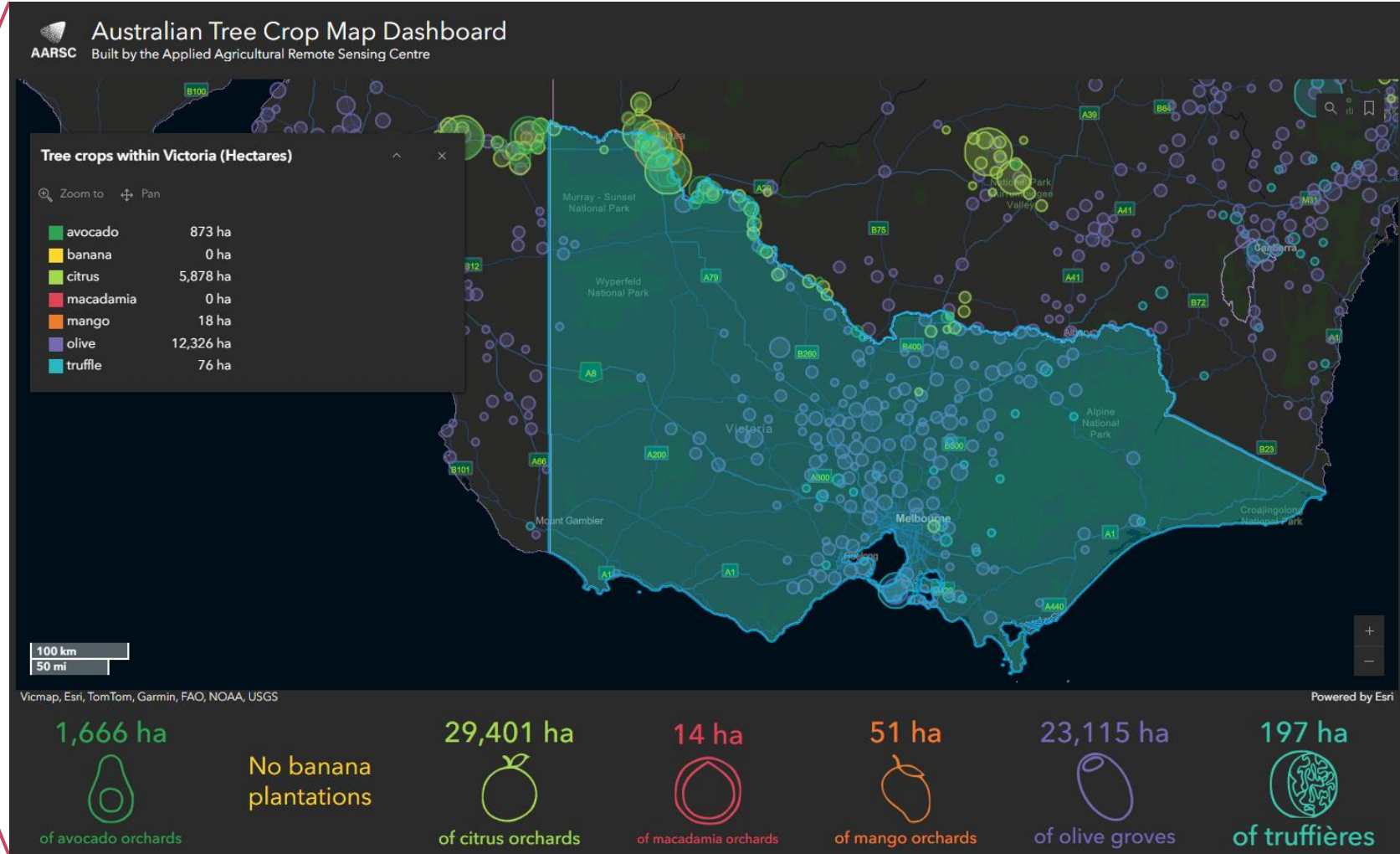
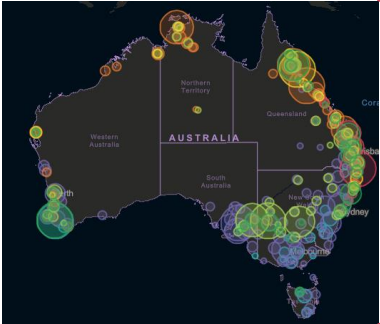
Section 02

The Australian Tree Crop Map Dashboard

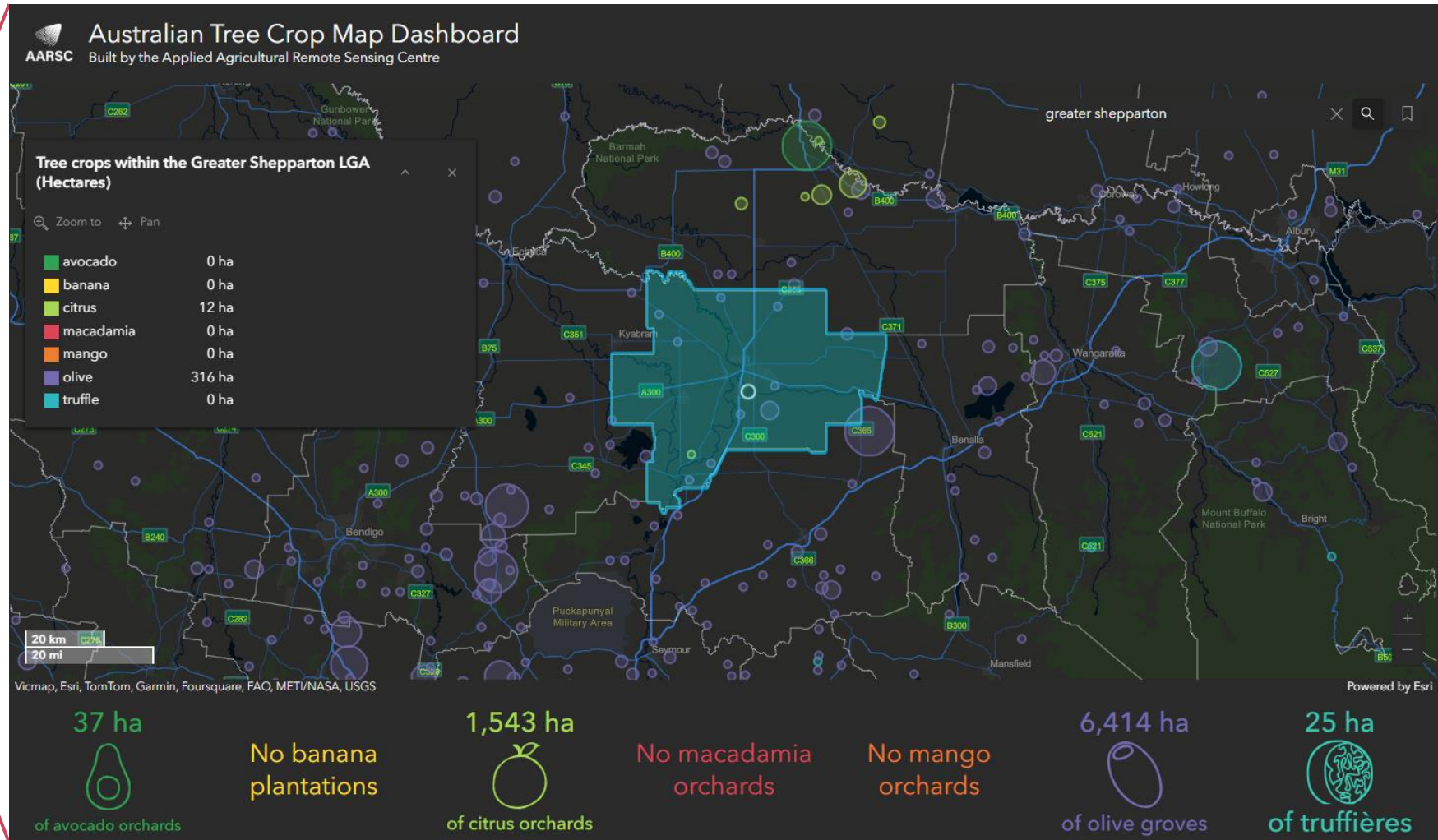
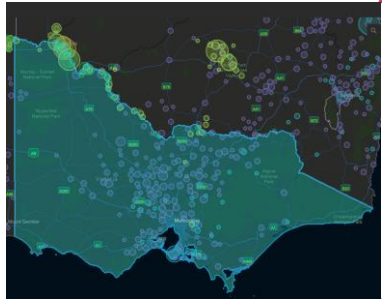
Australian Tree Crop Map Dashboard



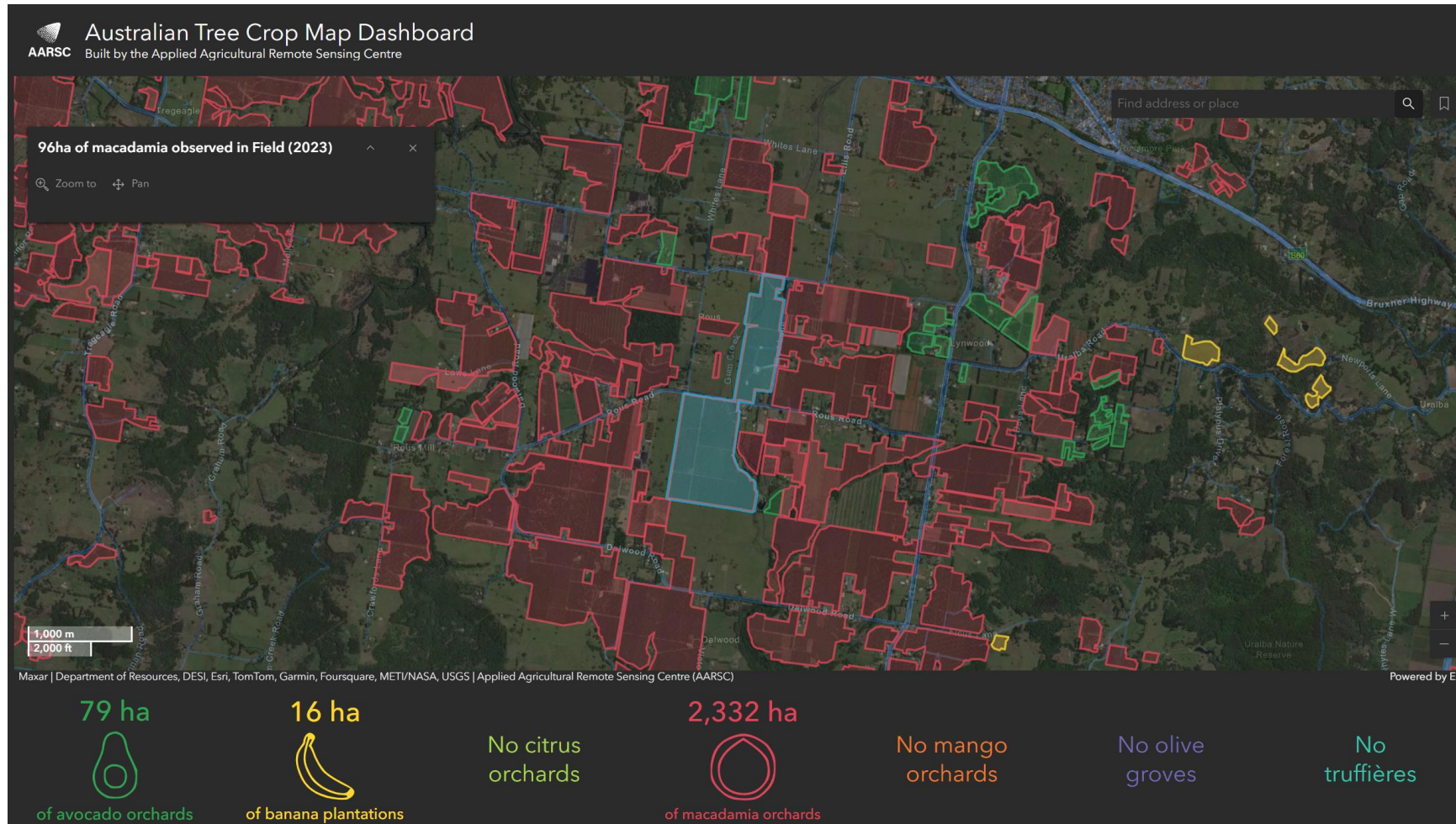
Tree Crop Map – State level



Tree Crop Map – LGA level



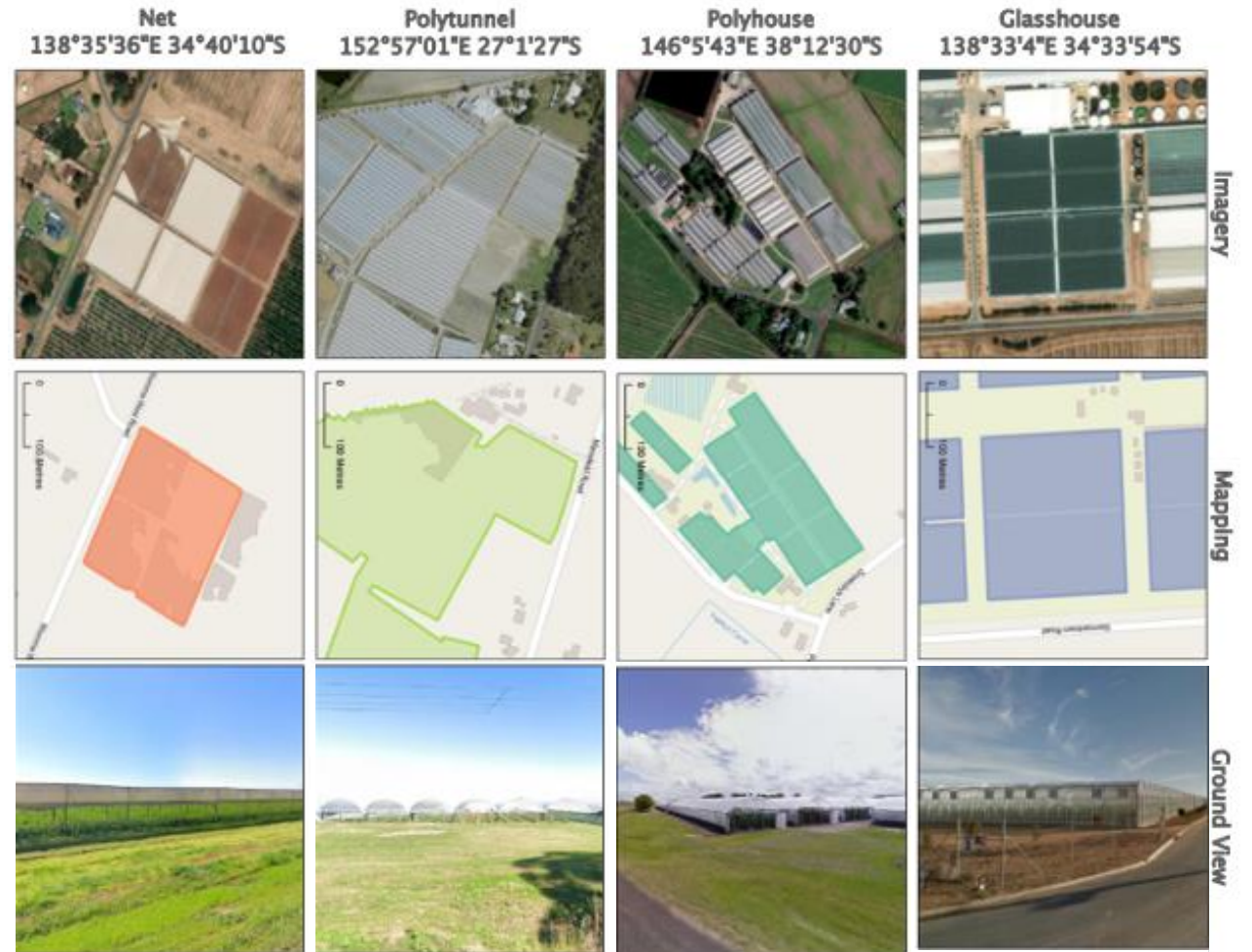
Tree Crop Map – Polygon level (>1ha)



National Map of Protected Cropping Systems

National map of all protected cropping systems in Australia

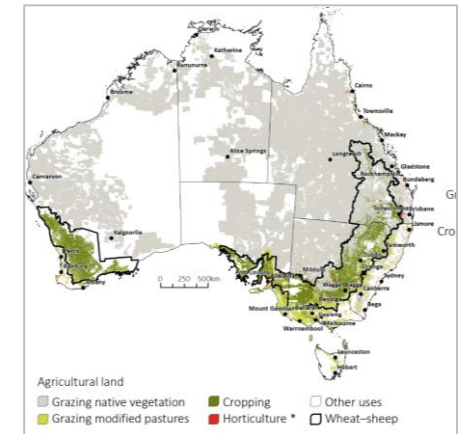
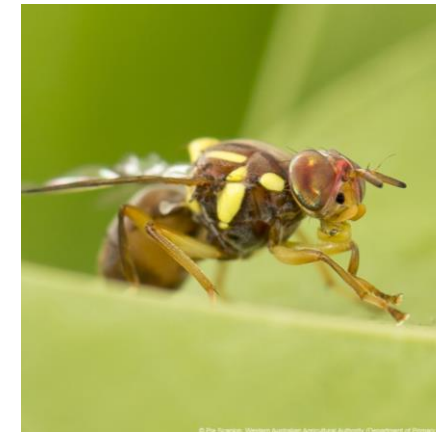
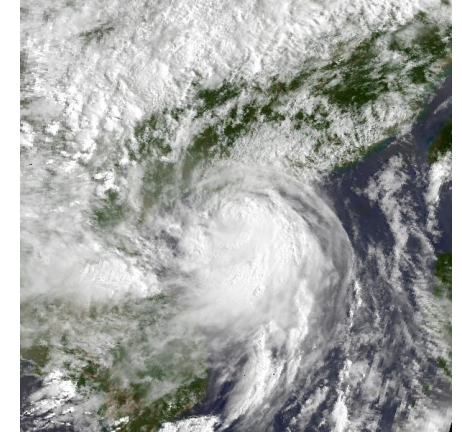
- Publicly accessible imagery.
- Published PCS dashboard in July 2023.
- Deep learning model developed.
- Supported Varroa mite response in NSW.



Mapping applications

Applications:

- Rapid Response Map
 - Biosecurity response and recovery (e.g. Varroa).
 - Natural disaster management
- Analysis and metrics.
- Image analysis (e.g yield, vigour, productivity).
- Baseline for additional data.
- Industry planning and forecasting.



**Hort
Innovation**

Thank you



Hort Innovation website



**Australian Tree Crop Map
Dashboard**